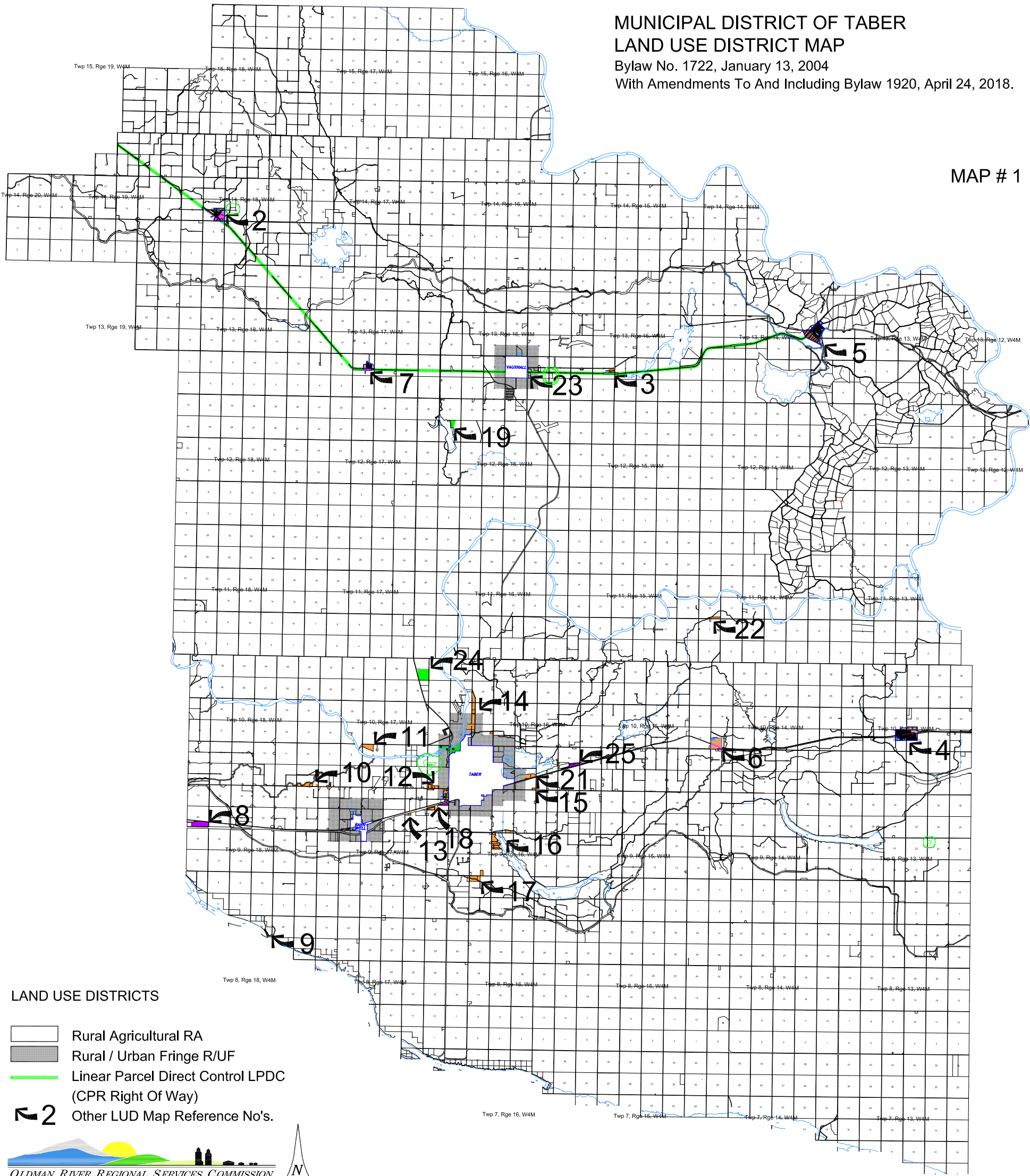


MUNICIPAL DISTRICT OF TABER  
LAND USE DISTRICT MAP

Bylaw No. 1722, January 13, 2004  
With Amendments To And Including Bylaw 1920, April 24, 2018.

MAP # 1



LAND USE DISTRICTS

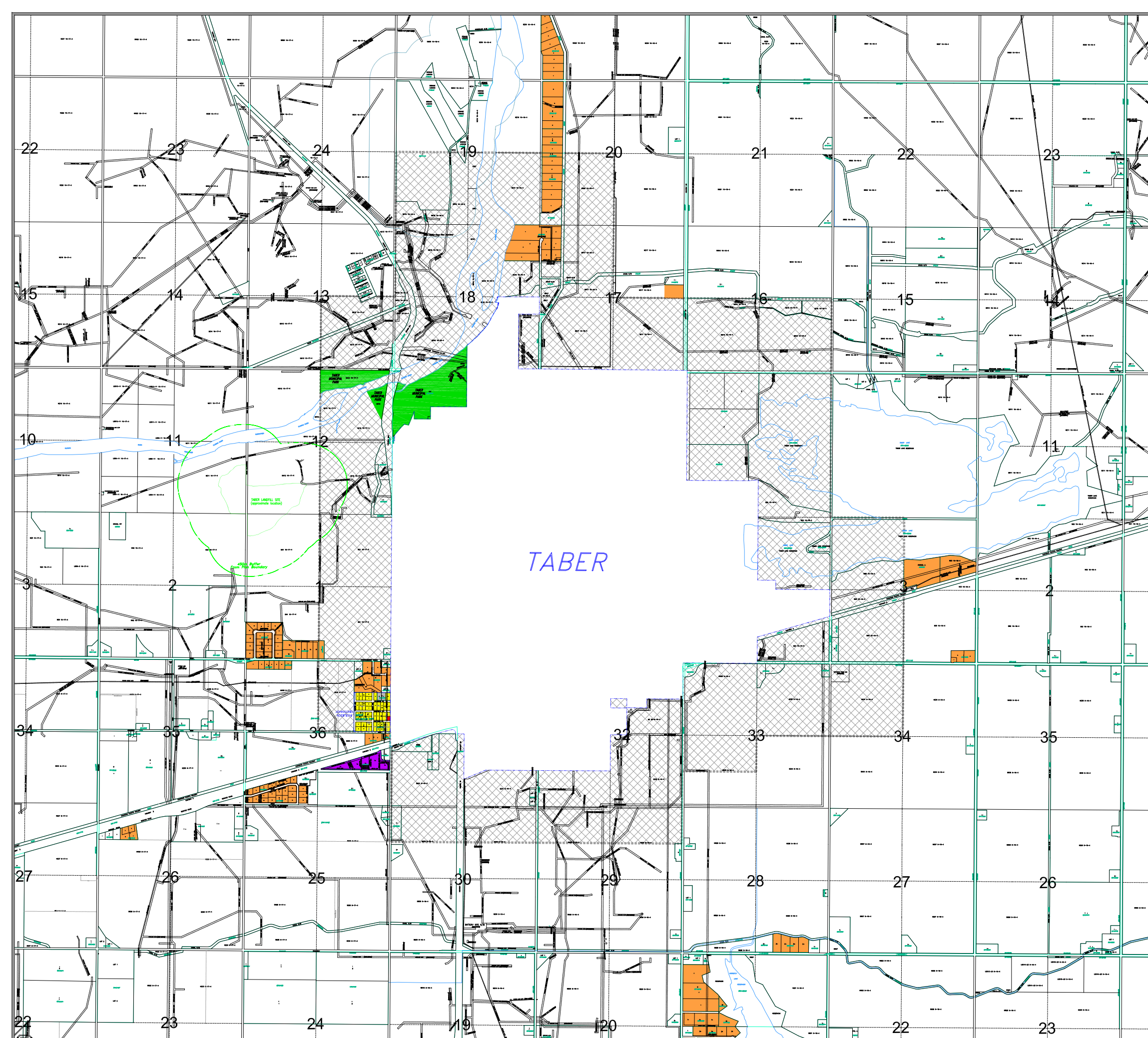
- Rural Agricultural RA
- Rural / Urban Fringe R/UF
- Linear Parcel Direct Control LPDC  
(CPR Right Of Way)
- Other LUD Map Reference No's.





# MUNICIPAL DISTRICT OF TABER TABER FRINGE AREA LAND USE DISTRICT MAP

Bylaw No. 1722, January 13, 2004  
 With Amendments To And Including Bylaw 1733, October 12, 2004  
 With Amendments To And Including Bylaw 1764, March 13, 2007.  
 With Amendments To And Including Bylaw 1826, July 12, 2011  
 With Amendments To And Including Bylaw 1830, July 12, 2011  
 With Amendments To And Including Bylaw 1883, August 11, 2015.  
 With Amendments To And Including Bylaw 1885, September 8, 2015.  
 With Amendments To And Including Bylaw 1920, April 24, 2018.

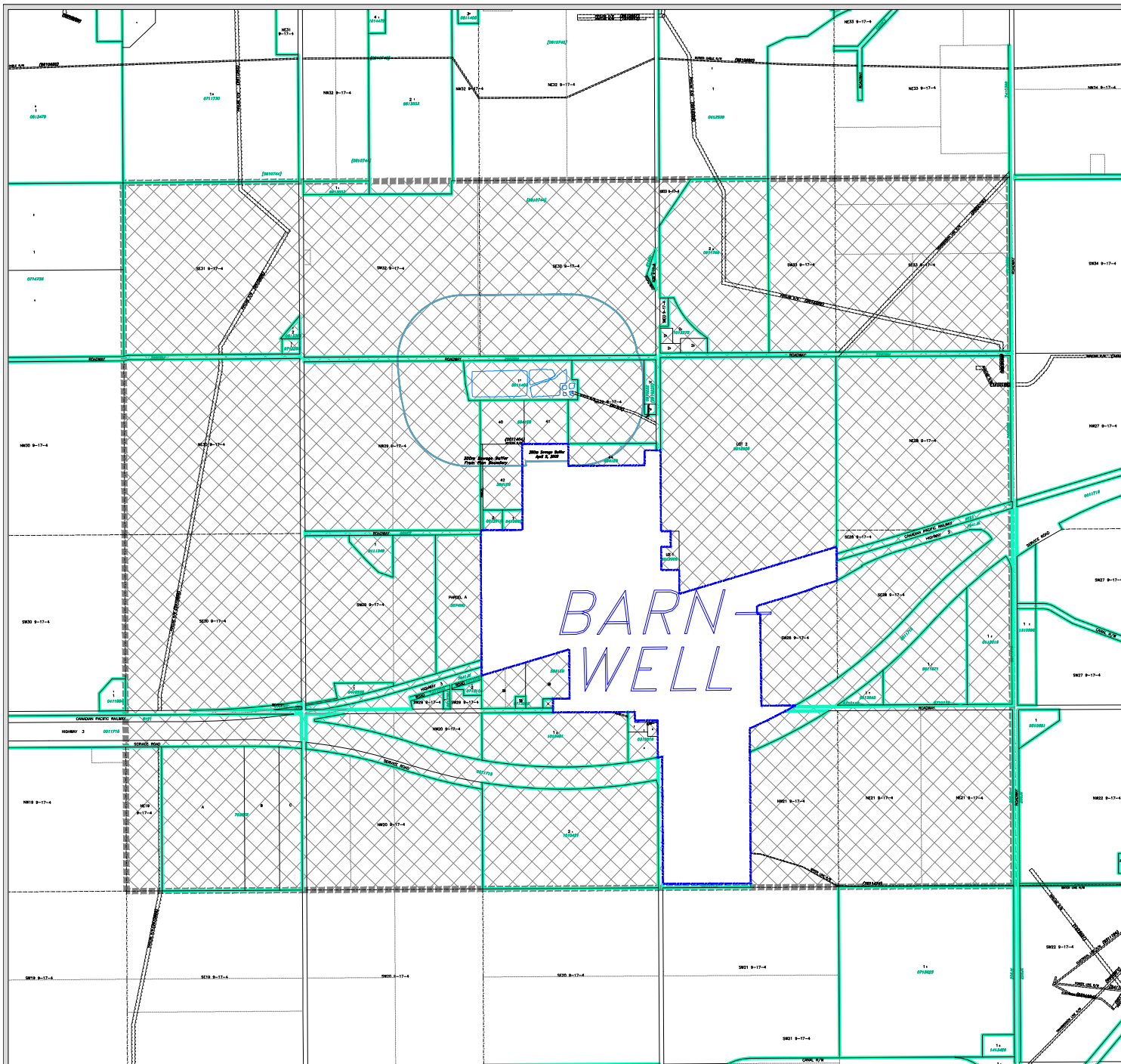


## LAND USE DISTRICTS

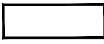

-  Rural Agricultural RA
-  Hamlet Residential HR
-  Grouped Country Residential GCR
-  Rural / Urban Fringe R/UF
-  Hamlet Commercial HC
-  Grouped Rural Industrial GRI
-  Direct Control DC
-  Taber Municipal Park

MAP # 1-A





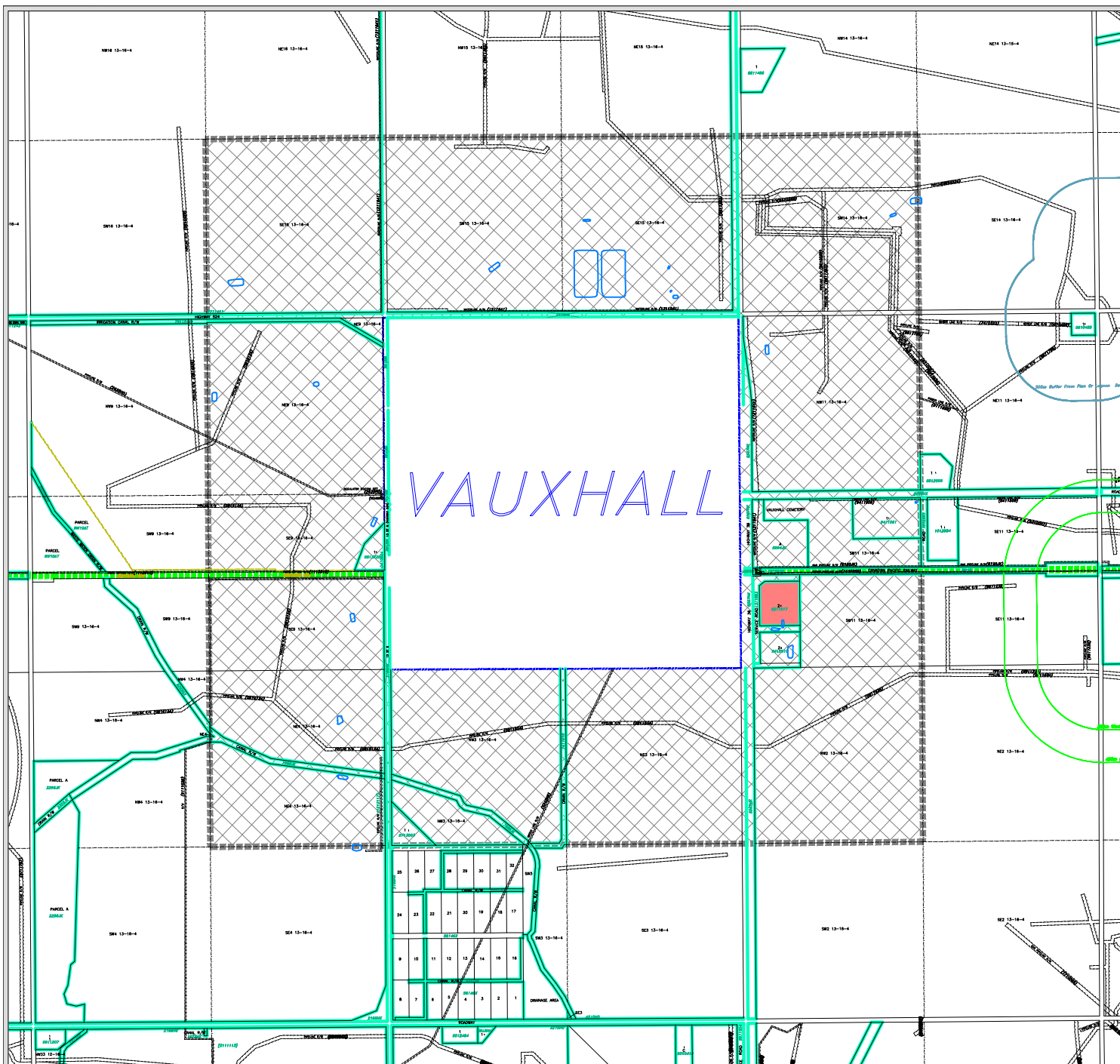
**MUNICIPAL DISTRICT OF TABER  
BARNWELL FRINGE AREA  
LAND USE DISTRICT MAP**  
Bylaw No. 1722, January 13, 2004

-  Rural Agricultural RA
-  Rural / Urban Fringe R/UF

**MAP # 1-B**











# MUNICIPAL DISTRICT OF TABER VAUXHALL FRINGE AREA LAND USE DISTRICT MAP

Bylaw No. 1722, January 13, 2004

With Amendments To And Including Bylaw No. 1783, August 12, 2008

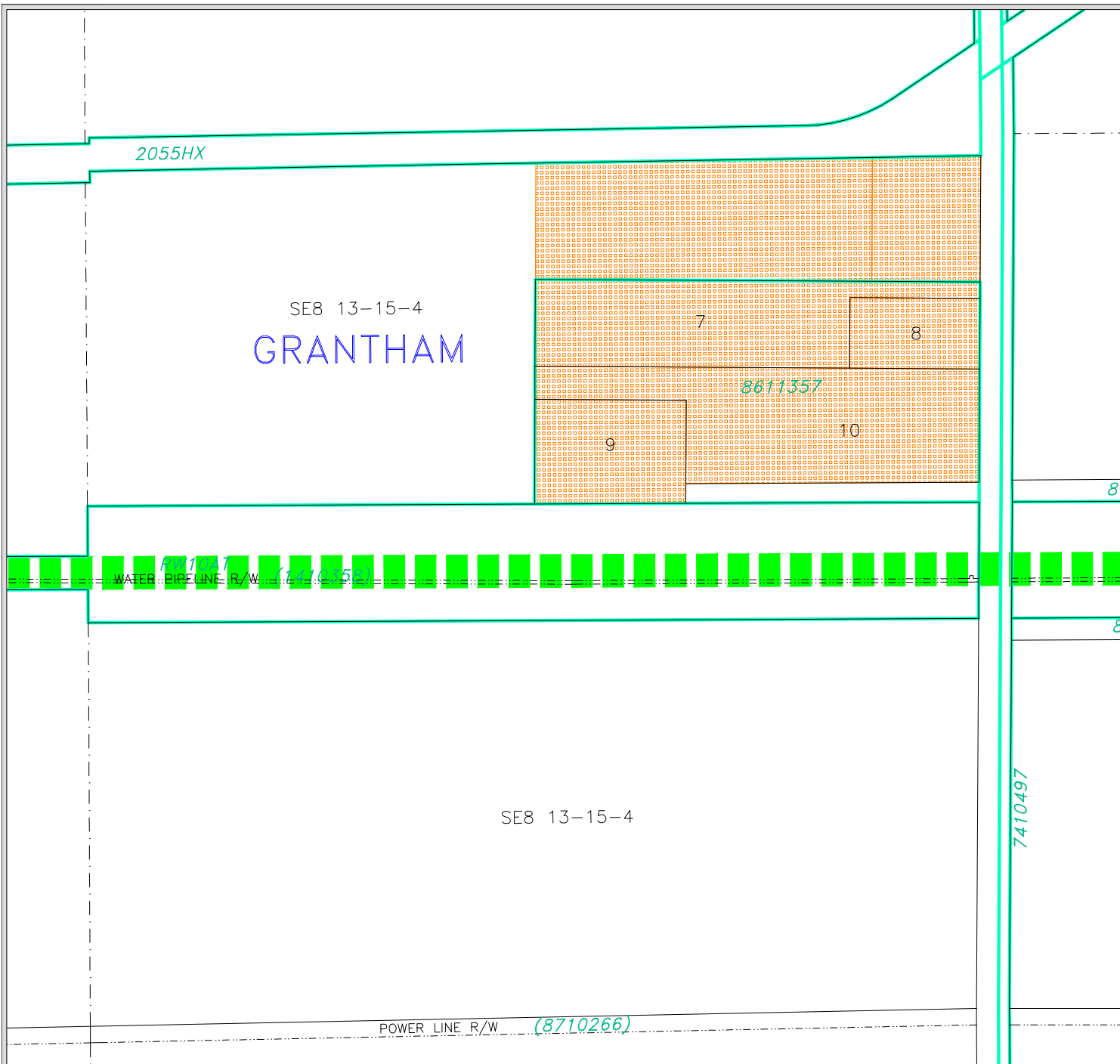
-  Rural Agricultural RA
-  Rural Highway Commercial RHC
-  Rural / Urban Fringe R/UF
-  Linear Parcel Direct Control LPDC

MAP # 1-C











**MUNICIPAL DISTRICT OF TABER  
LOCALITY OF GRANTHAM  
LAND USE DISTRICT MAP**  
Bylaw No. 1722, January 13, 2004

-  Rural Agricultural RA
-  Grouped Country Residential GCR
-  Linear Parcel Direct Control LPDC

**MAP # 3**

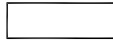


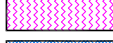







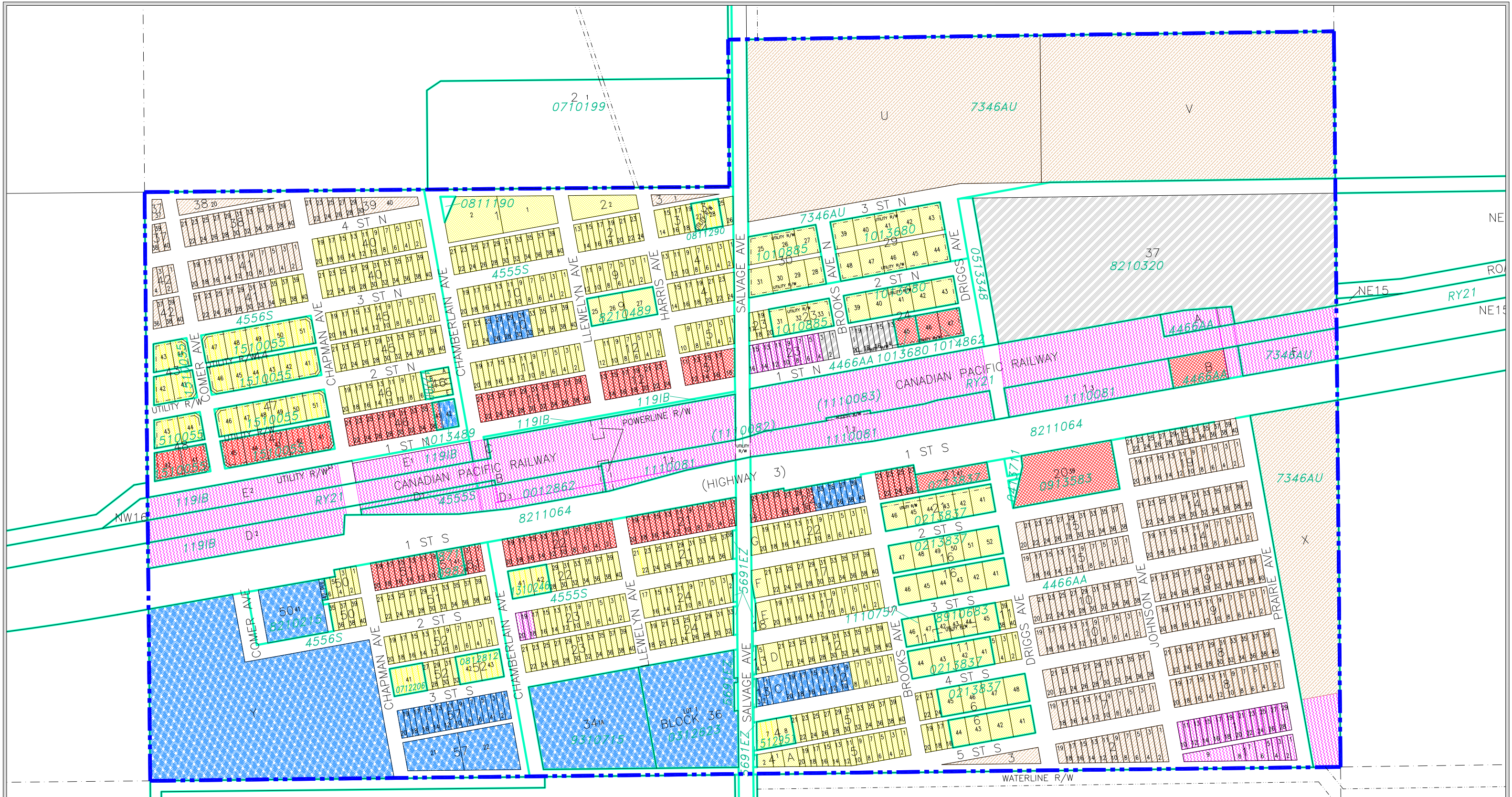
# MUNICIPAL DISTRICT OF TABER DESIGNATED HAMLET OF GRASSY LAKE LAND USE DISTRICT MAP

Bylaw No. 1722, January 13, 2004  
With Amendments To And Including Bylaw 1902, April 11, 2017.

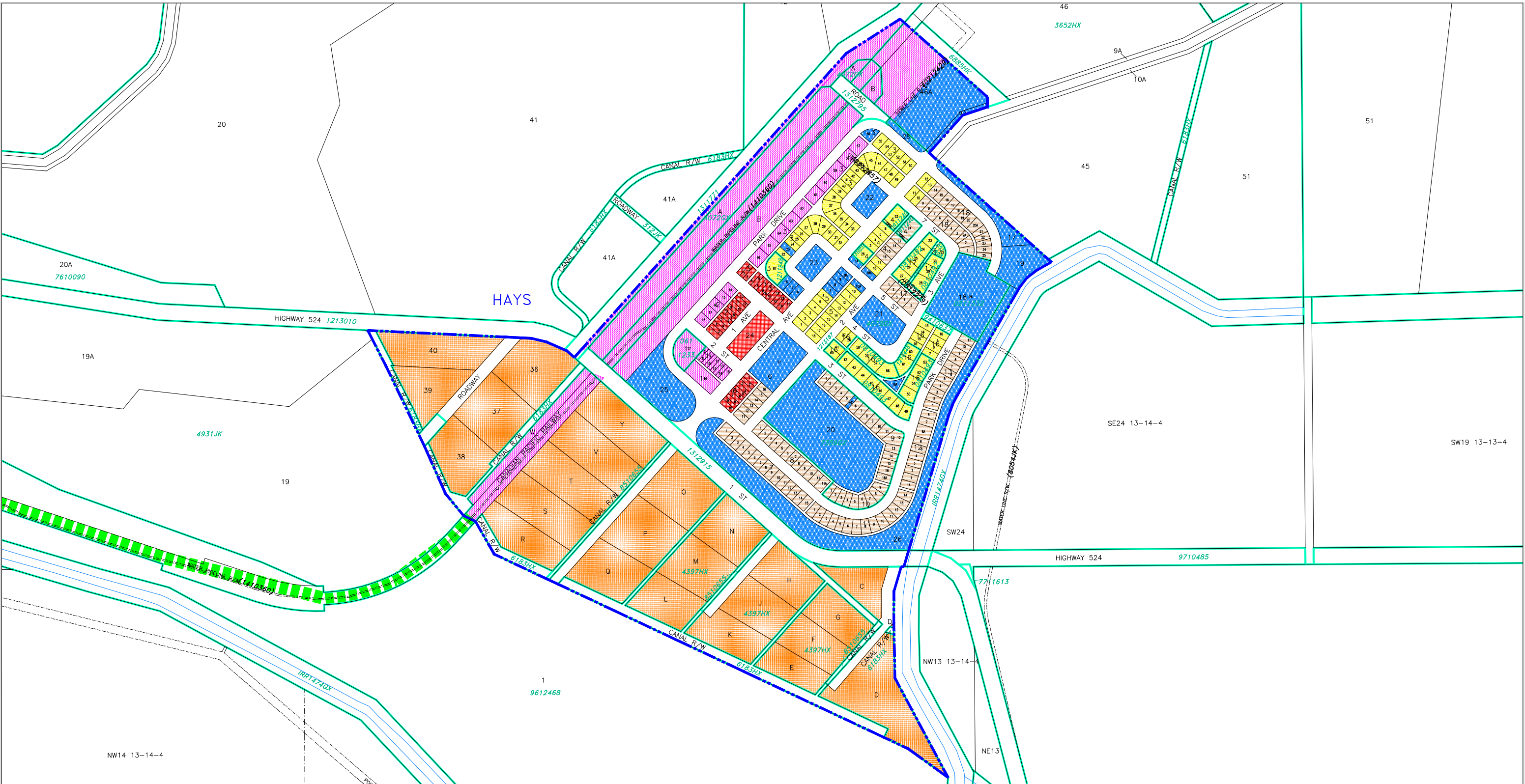
July 18, 2017 N:\Taber-Municipal-District\Taber-MD LUD & Land Use Redesignations\Taber MD LUB 1722 January 2004 (Maps amended to Bylaw 1902).dwg

- Designated Hamlet Boundary
-  Rural Agricultural RA
-  Hamlet Residential HR
-  Hamlet Commercial HC
-  Hamlet Industrial HI
-  Hamlet Public/Institutional HP/I
-  Hamlet Transitional/Agricultural HT/A
-  Direct Control DC

MAP # 4







# MUNICIPAL DISTRICT OF TABER DESIGNATED HAMLET OF HAYS LAND USE DISTRICT MAP

Bylaw No. 1722, January 13, 2004  
 With Amendments To And Including Bylaw 1843, Nov 27, 2012

- Designated Hamlet Boundary
- Rural Agricultural RA
- Grouped Country Residential GCR
- Hamlet Residential HR
- Hamlet Commercial HC
- Hamlet Industrial HI
- Hamlet Public/Institutional HP/I
- Hamlet Transitional/Agricultural HT/A
- Linear Parcel Direct Control LPDC

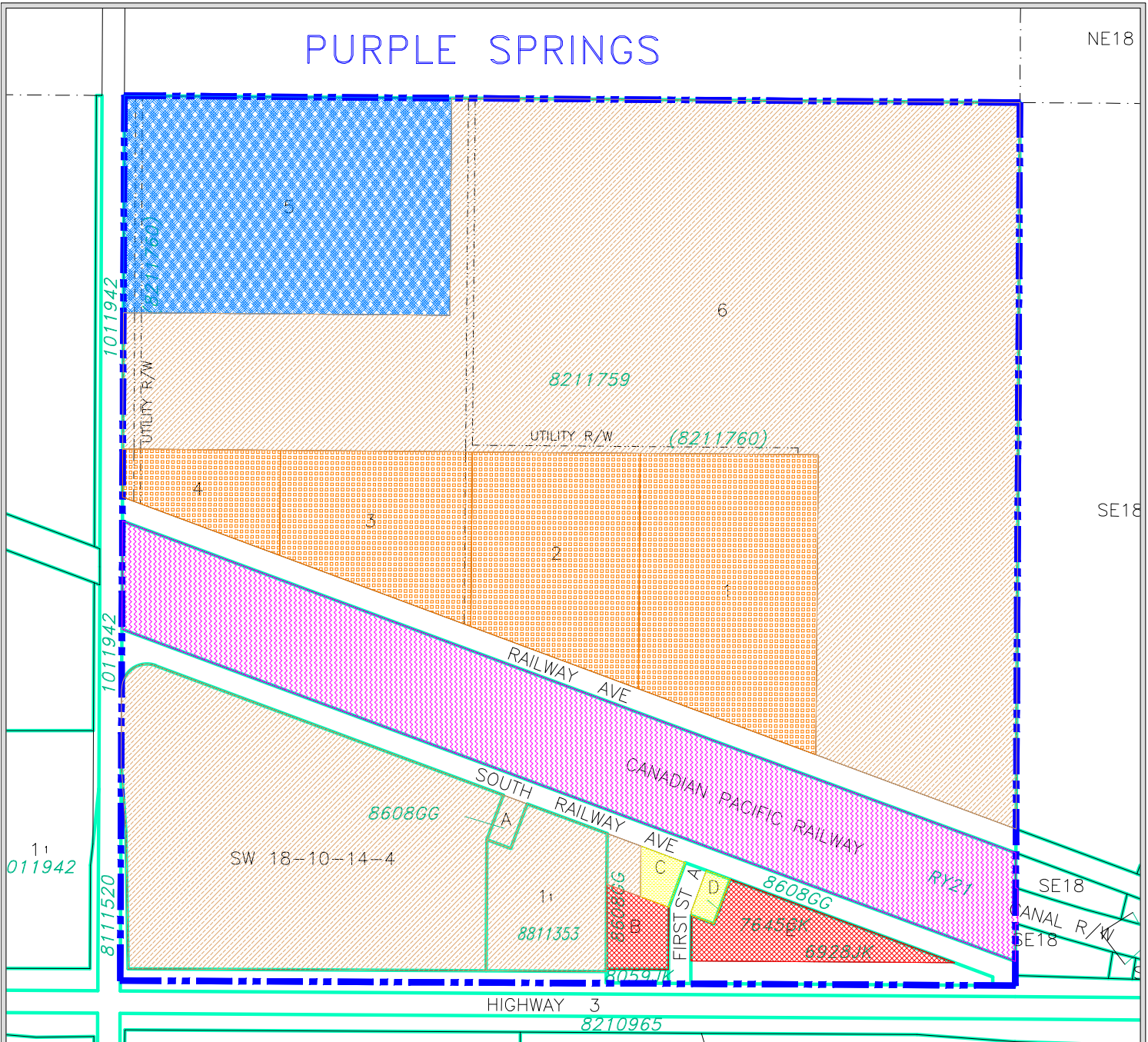
MAP # 5





# PURPLE SPRINGS

NE18



SE18

SE18

CANAL R/W  
SE18

## MUNICIPAL DISTRICT OF TABER DESIGNATED HAMLET OF PURPLE SPRINGS LAND USE DISTRICT MAP

Bylaw No. 1722, January 13, 2004

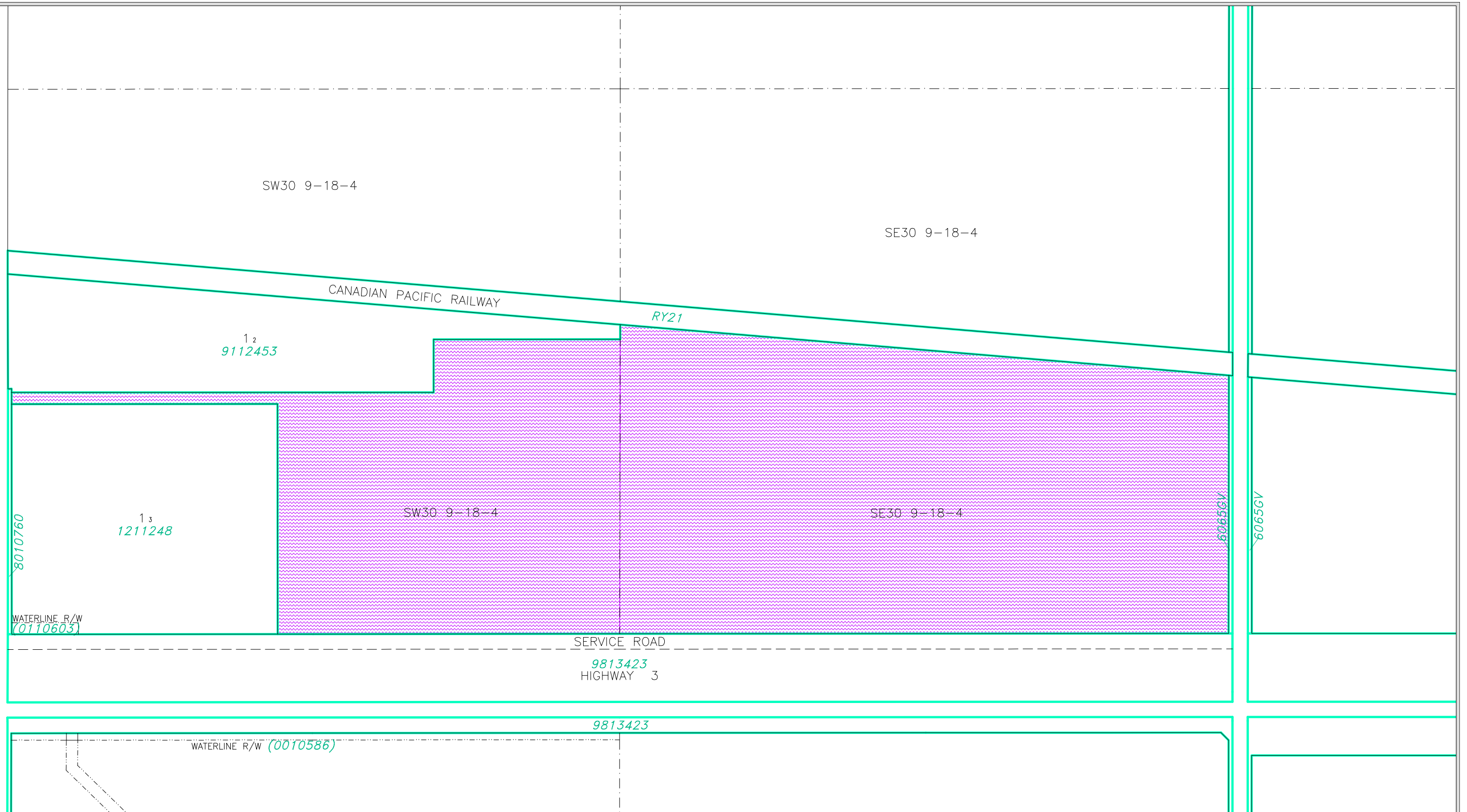
- Designated Hamlet Boundary
- Rural Agricultural RA
- Grouped Country Residential GCR
- Hamlet Residential HR
- Hamlet Commercial HC
- Hamlet Industrial HI
- Hamlet Public/Institutional HP/I
- Hamlet Transitional/Agricultural HT/A

MAP # 6









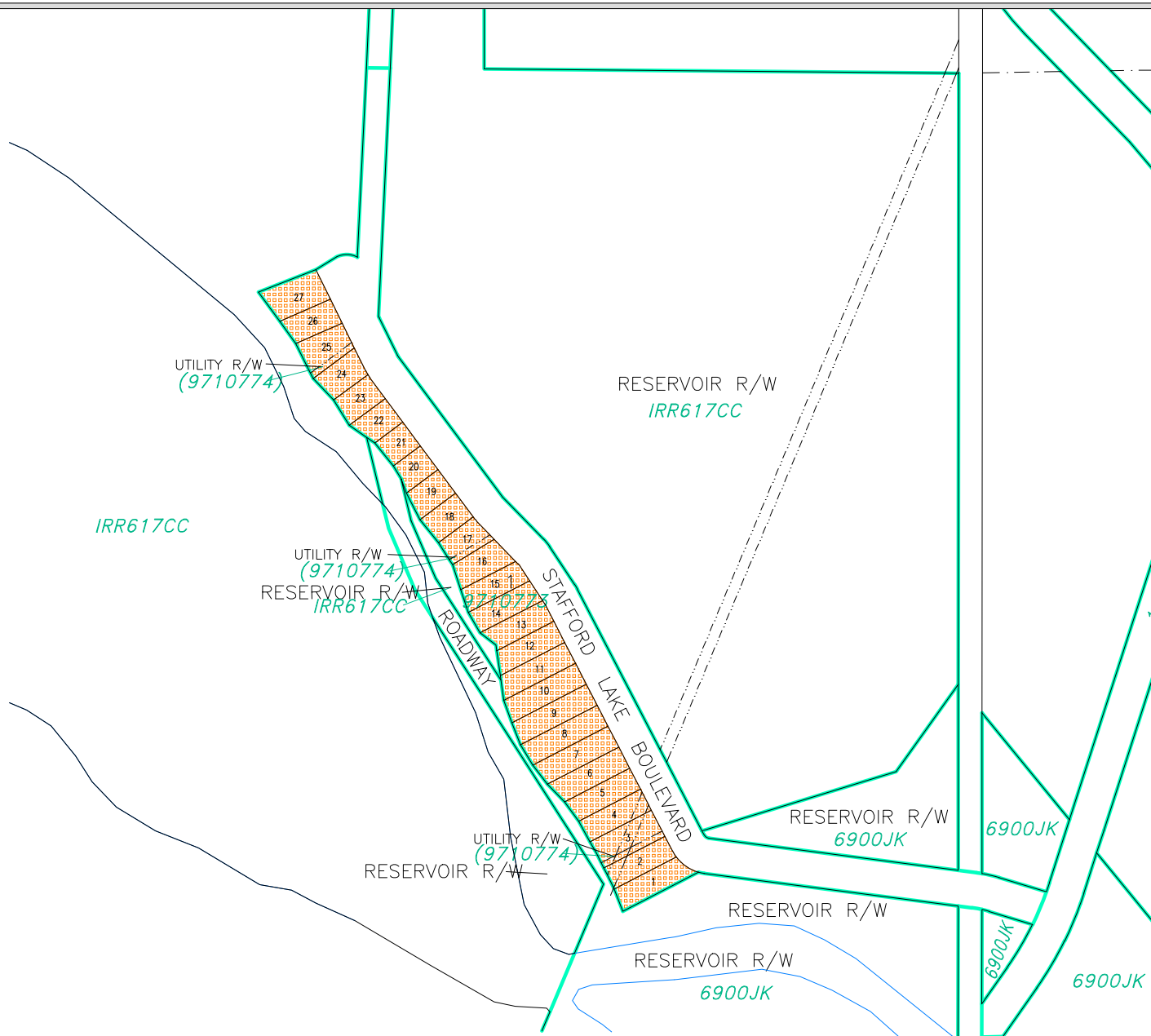
**MUNICIPAL DISTRICT OF TABER**  
**PORTION OF S 1/2 SEC 30, TWP 9, RGE 18, W 4 M**  
**LAND USE DISTRICT MAP**

Bylaw No. 1722, January 13, 2004

With amendments to and including Bylaw 1836, October 11, 2011

- Rural Agricultural RA
- Grouped Rural Industrial GRI

**MAP # 8**



**MUNICIPAL DISTRICT OF TABER  
REGISTERED PLAN 9710773 IN  
SW 1/4 SEC 35, TWP 8, RGE 18, W 4 M  
LAND USE DISTRICT MAP**

Bylaw No. 1722, January 13, 2004



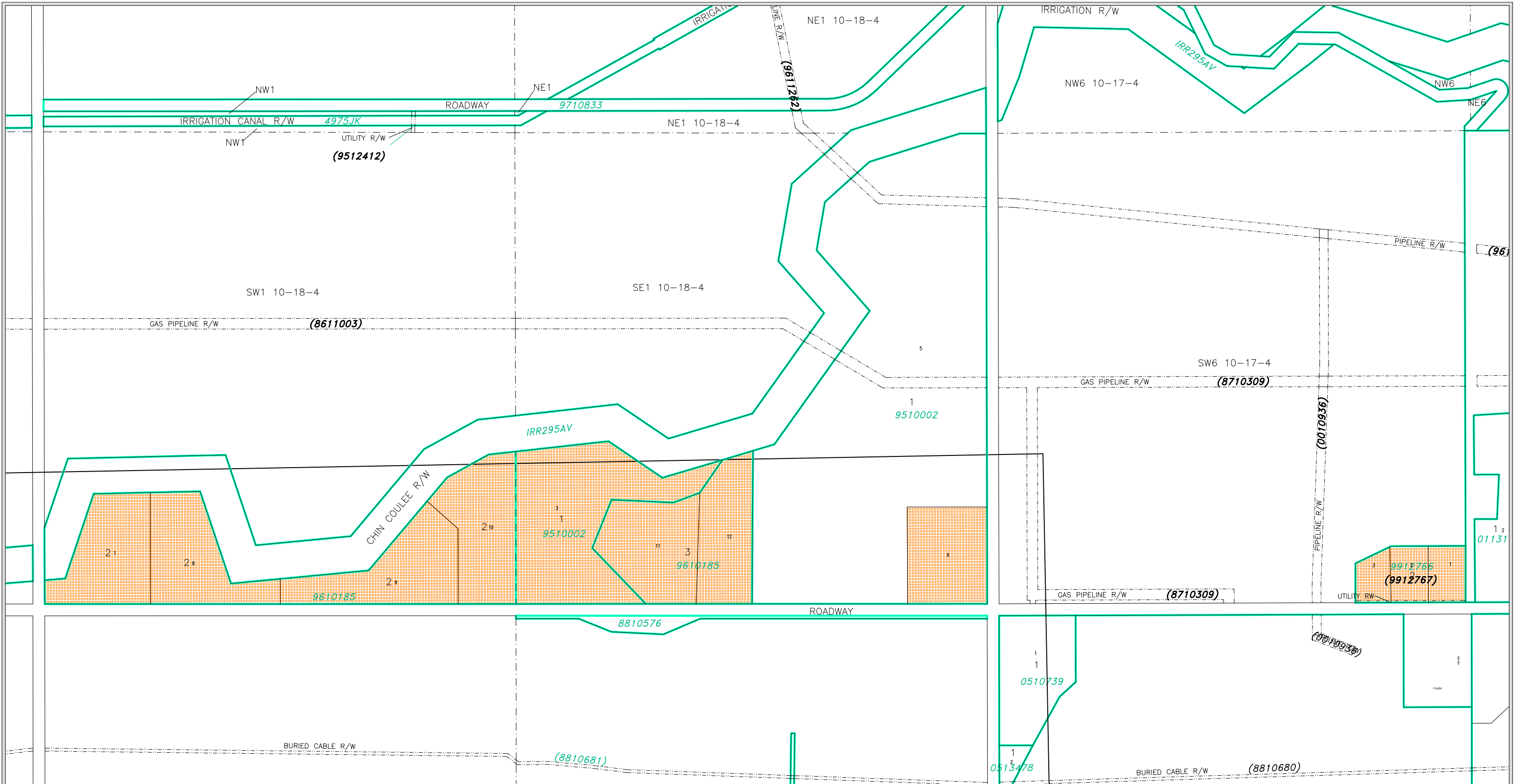
Rural Agricultural RA

Grouped Country Residential GCR

**MAP # 9**





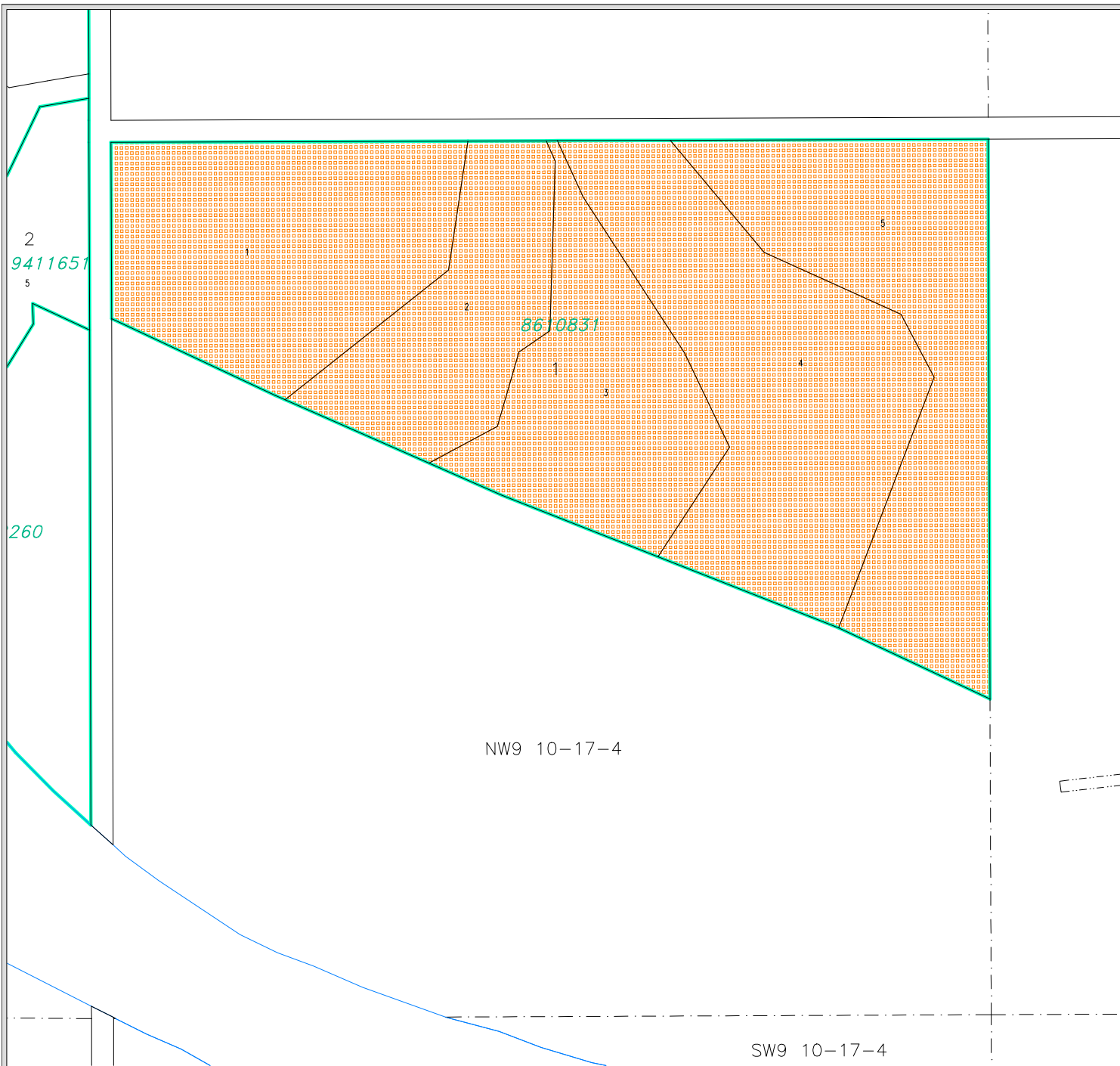


MUNICIPAL DISTRICT OF TABER  
 PORTIONS OF REGISTERED PLANS  
 9510002, 9610185 & 9912766 IN  
 SW 1/4 SEC 6, TWP 10, RGE 17, W 4 M  
 S 1/2 SEC 1, TWP 10, RGE 18, W 4 M  
 LAND USE DISTRICT MAP  
 Bylaw No. 1722, January 13, 2004

- Rural Agricultural RA
- Grouped Country Residential GCR



MAP # 10



**MUNICIPAL DISTRICT OF TABER  
REGISTERED PLAN 8610831 IN  
NW 1/4 SEC 9, TWP 10, RGE 17, W 4 M  
LAND USE DISTRICT MAP**  
Bylaw No. 1722, January 13, 2004

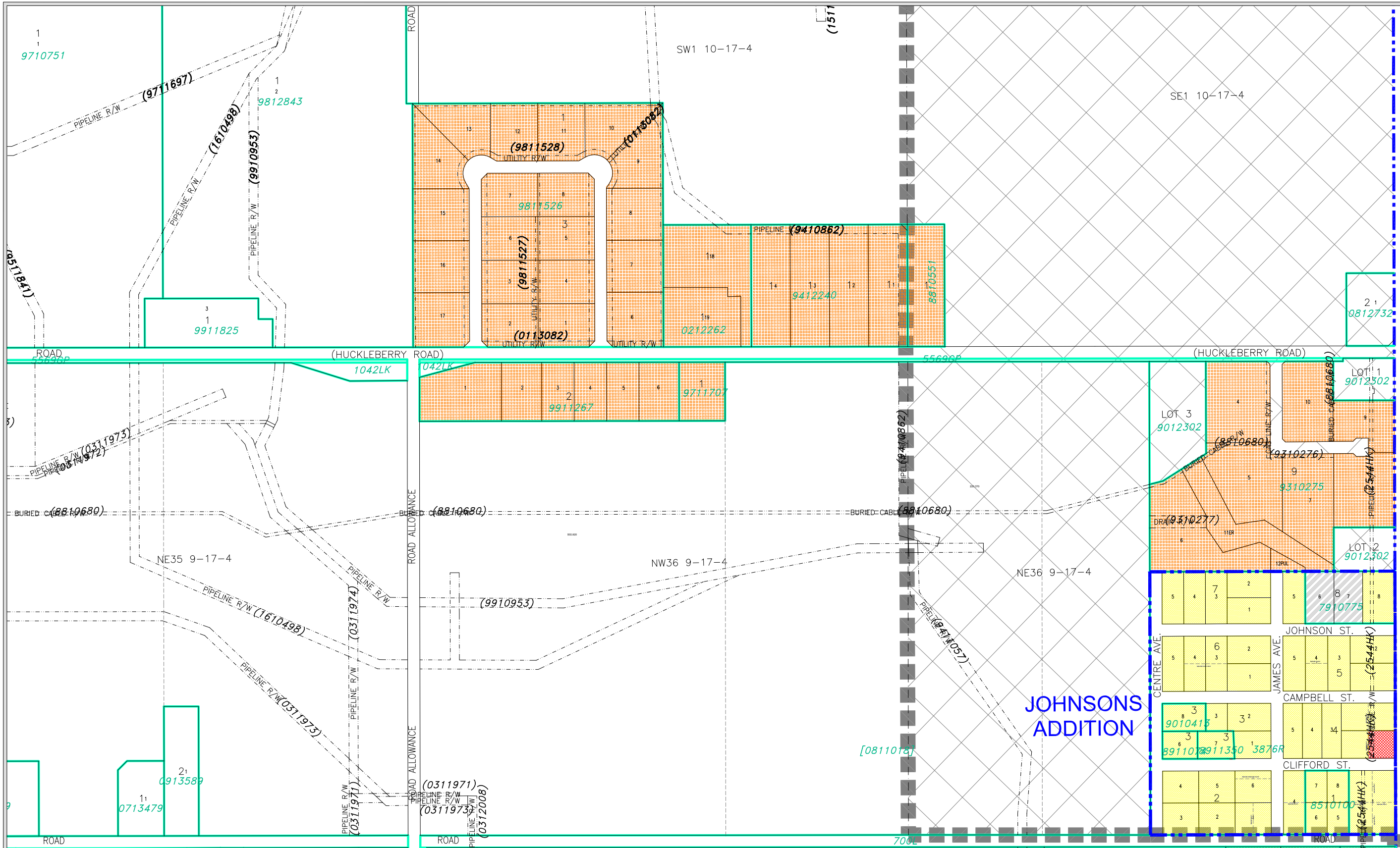


Rural Agricultural RA  
Grouped Country Residential GCR

**MAP # 11**







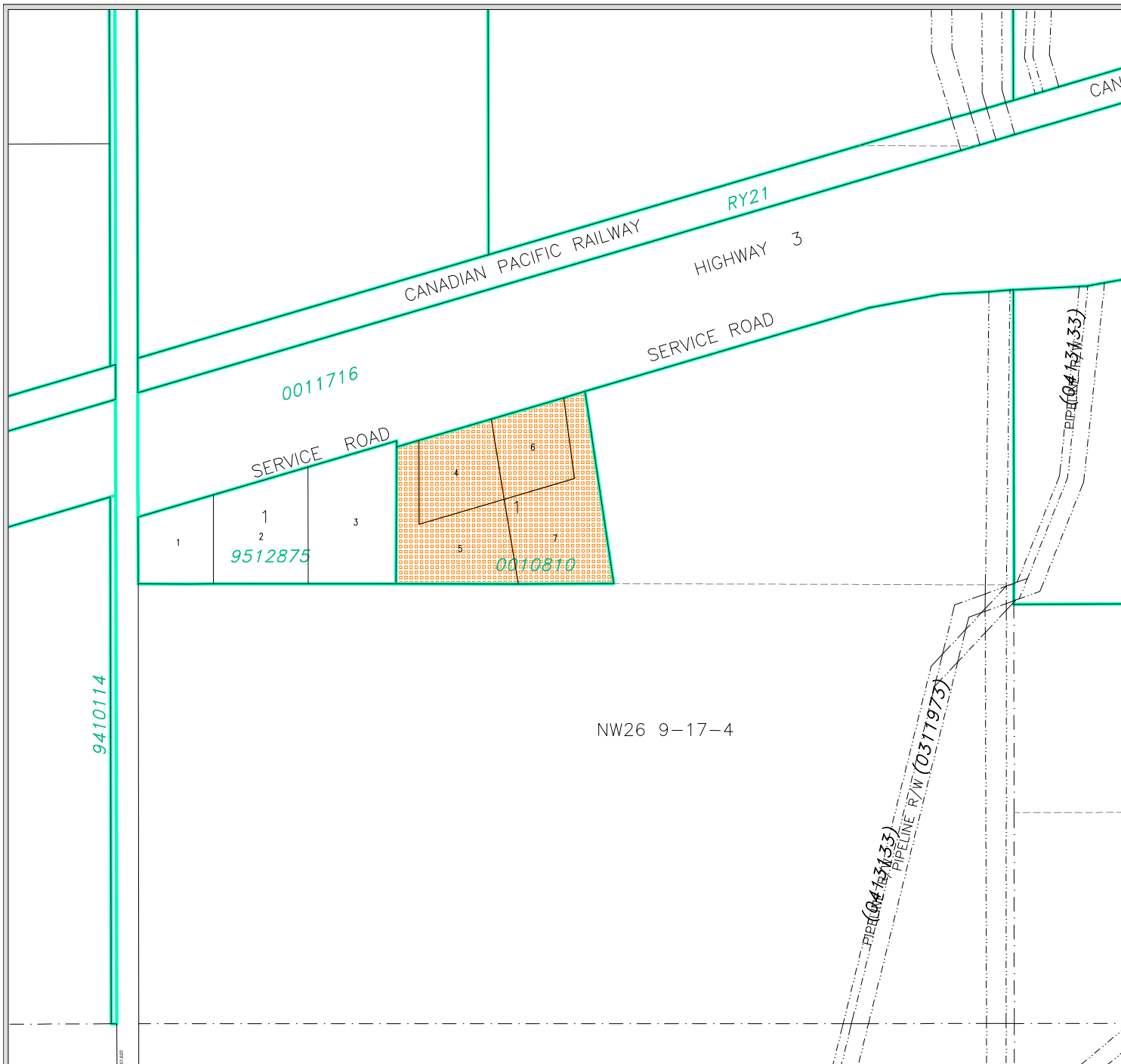
**MUNICIPAL DISTRICT OF TABER  
PORTIONS OF  
N 1/2 SEC 36, TWP 9, RGE 17, W 4 M  
SW 1/4 SEC 1, TWP 10, RGE 17, W 4 M  
LAND USE DISTRICT MAP**

Bylaw No. 1722, January 13, 2004, Amending Bylaw 1920, April 24, 2018  
May 24, 2018 N:\Taber-Municipal-District\Taber-MD LUD & Land Use Redesignations\Taber MD LUB 1722 January 2004 (Maps amended to Bylaw 1920).dwg


- Designated Hamlet Boundary
- Rural Agricultural RA
- Hamlet Residential HR
- Hamlet Commercial HC
- Grouped Country Residential GCR
- Direct Control DC
- Rural Urban Fringe RUF

MAP # 12





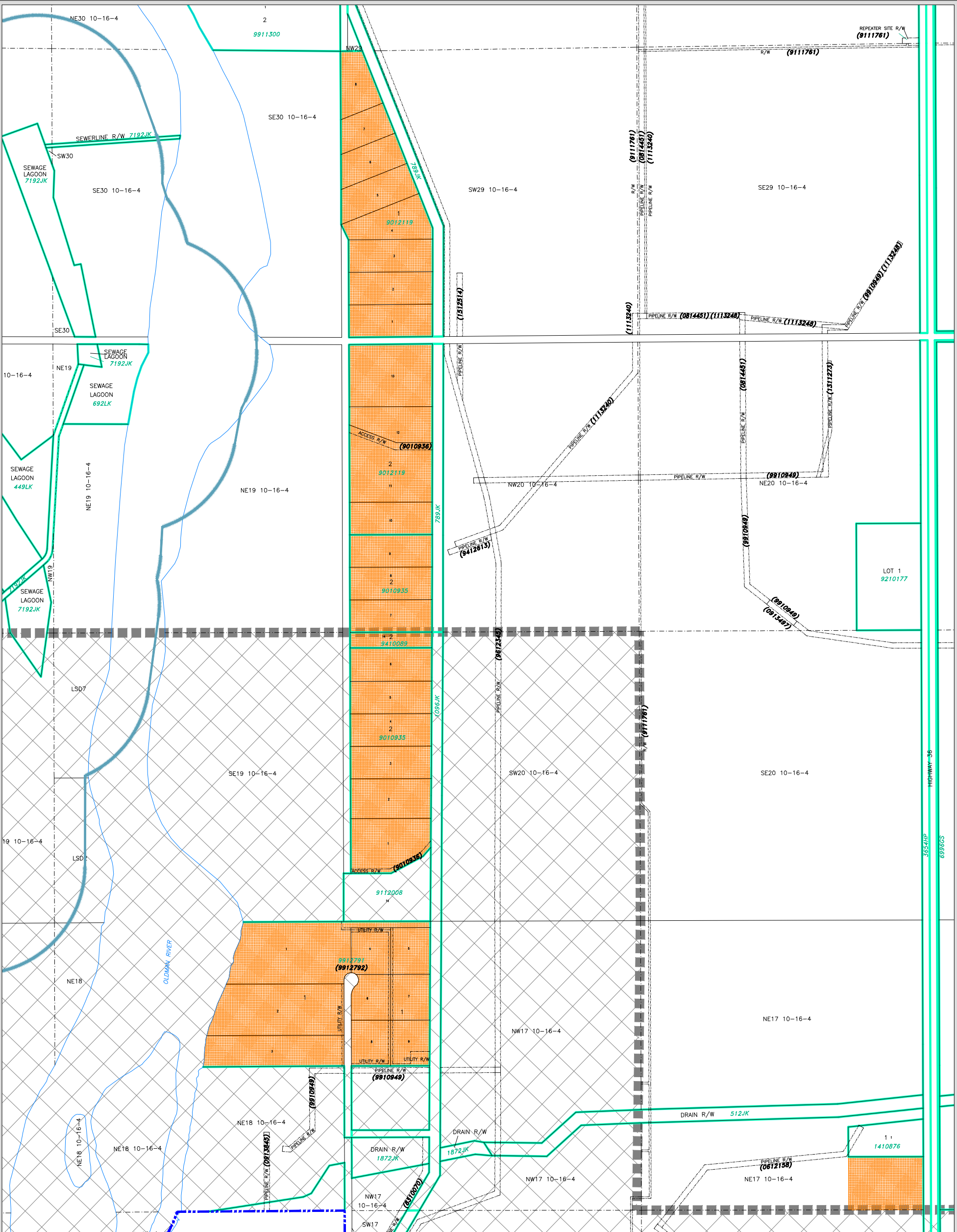
**MUNICIPAL DISTRICT OF TABER**  
**REGISTERED PLAN 0010810 IN**  
**NW 1/4 SEC 26, TWP 9, RGE 17, W 4 M**  
**LAND USE DISTRICT MAP**  
 Bylaw No. 1722, January 13, 2004

-  Rural Agricultural RA
-  Grouped Country Residential GCR

**MAP # 13**





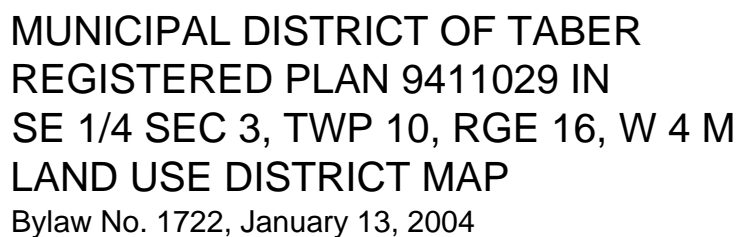


MUNICIPAL DISTRICT OF TABER  
REGISTERED PLAN 9012119, 9010935,  
9410089 & 9912791 IN PORTIONS OF  
NE 1/4 SEC 17, NE 1/4 SEC 18, NW 1/4 SEC 20  
& SW 1/4 SEC 29, TWP 10, RGE 16, W 4  
LAND USE DISTRICT MAP  
Bylaw No. 1722, January 13, 2004

	Rural Agricultural RA
	Rural Urban Fringe RUF
	Grouped Country Residential GCR

MAP # 14



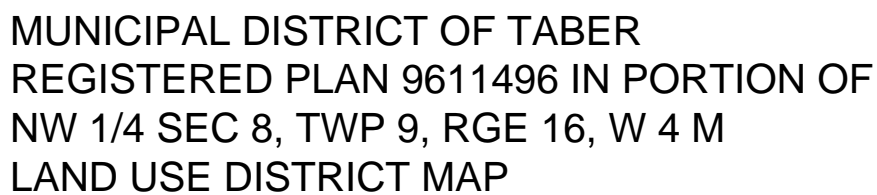


- MAP # 15

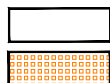








With Amendments To And Including Bylaw 1792, April 14, 2009.



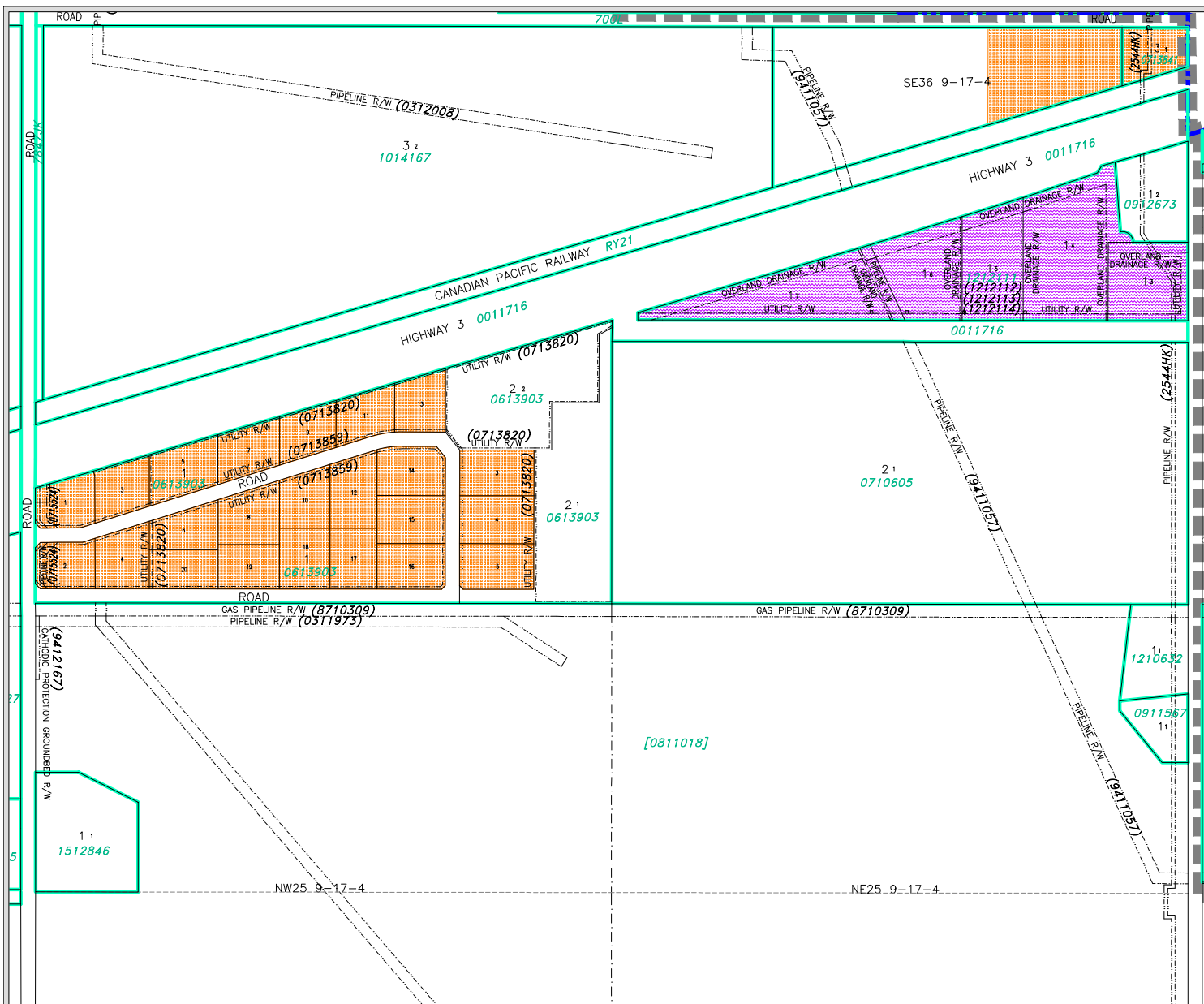
Rural Agricultural RA

Grouped Country Residential GCR

MAP # 17







# MUNICIPAL DISTRICT OF TABER PORTIONS OF REGISTERED PLANS 0613903 & 0710605 IN S 1/2 SEC 36, TWP 9, RGE 17, W 4 M LAND USE DISTRICT MAP

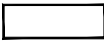


Bylaw No. 1722, January 13, 2004

With Amendments To And Including Bylaw 1733, October 12, 2004.

With Amendments To And Including Bylaw 1826, July 12, 2011

With Amendments To And Including Bylaw 1830, July 12, 2011

With Amendments To And Including Bylaw 1883, August 11, 2015

-  Rural Agricultural RA
-  Grouped Country Residential GCR
-  Grouped Rural Industrial GRI

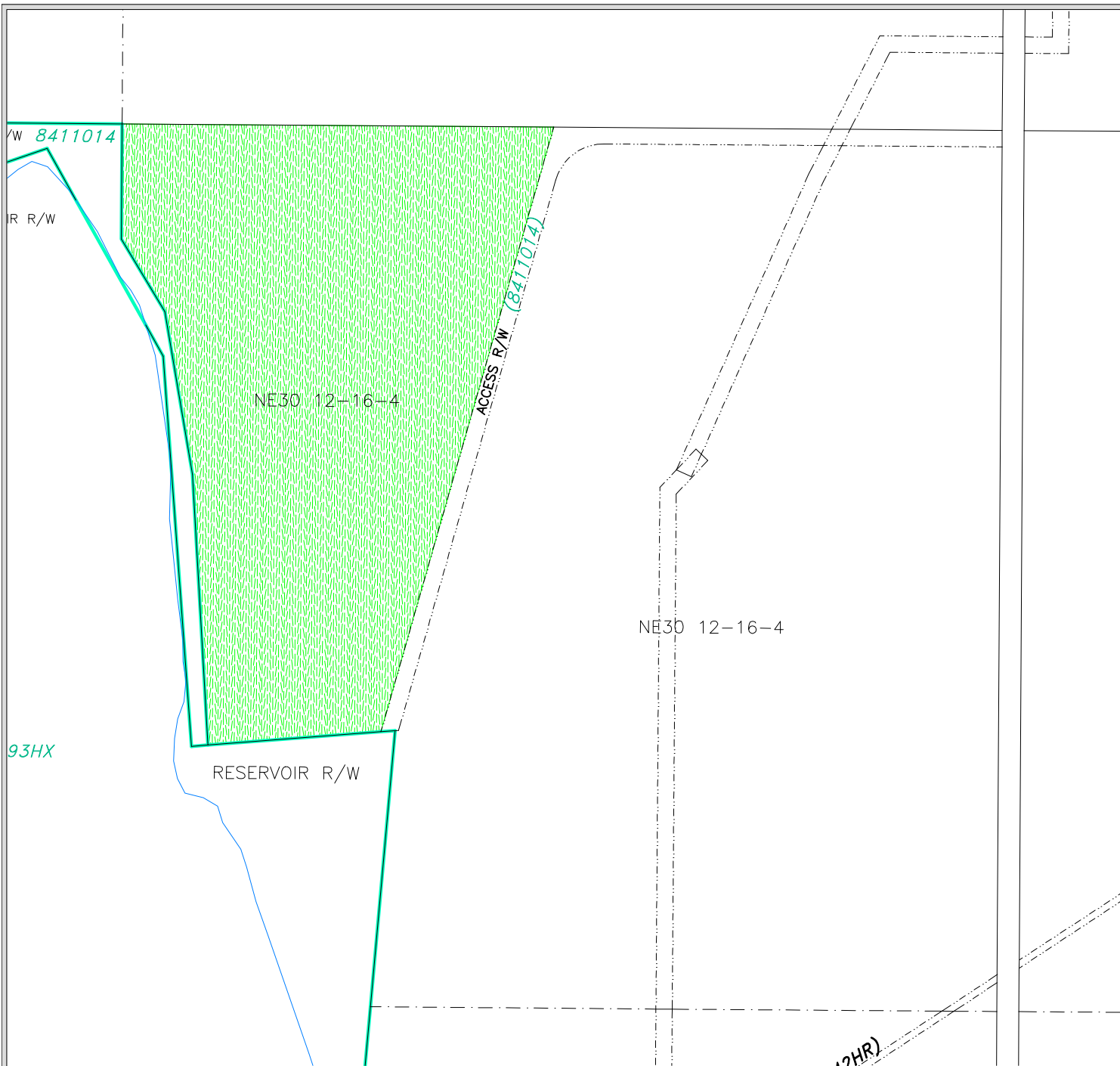
MAP # 18



OLDMAN RIVER REGIONAL SERVICES COMMISSION

November 26, 2015 C:\Users\user\appdata\local\temp\AcPublish\_3772\  
 Taber MD LUB 1722 January 2004 (Maps amended to Bylaw 1887).dwg







# MUNICIPAL DISTRICT OF TABER NE1/4 SEC 30, TWP 12, RGE 16, W 4 M LAND USE DISTRICT MAP

Bylaw No. 1722, January 13, 2004

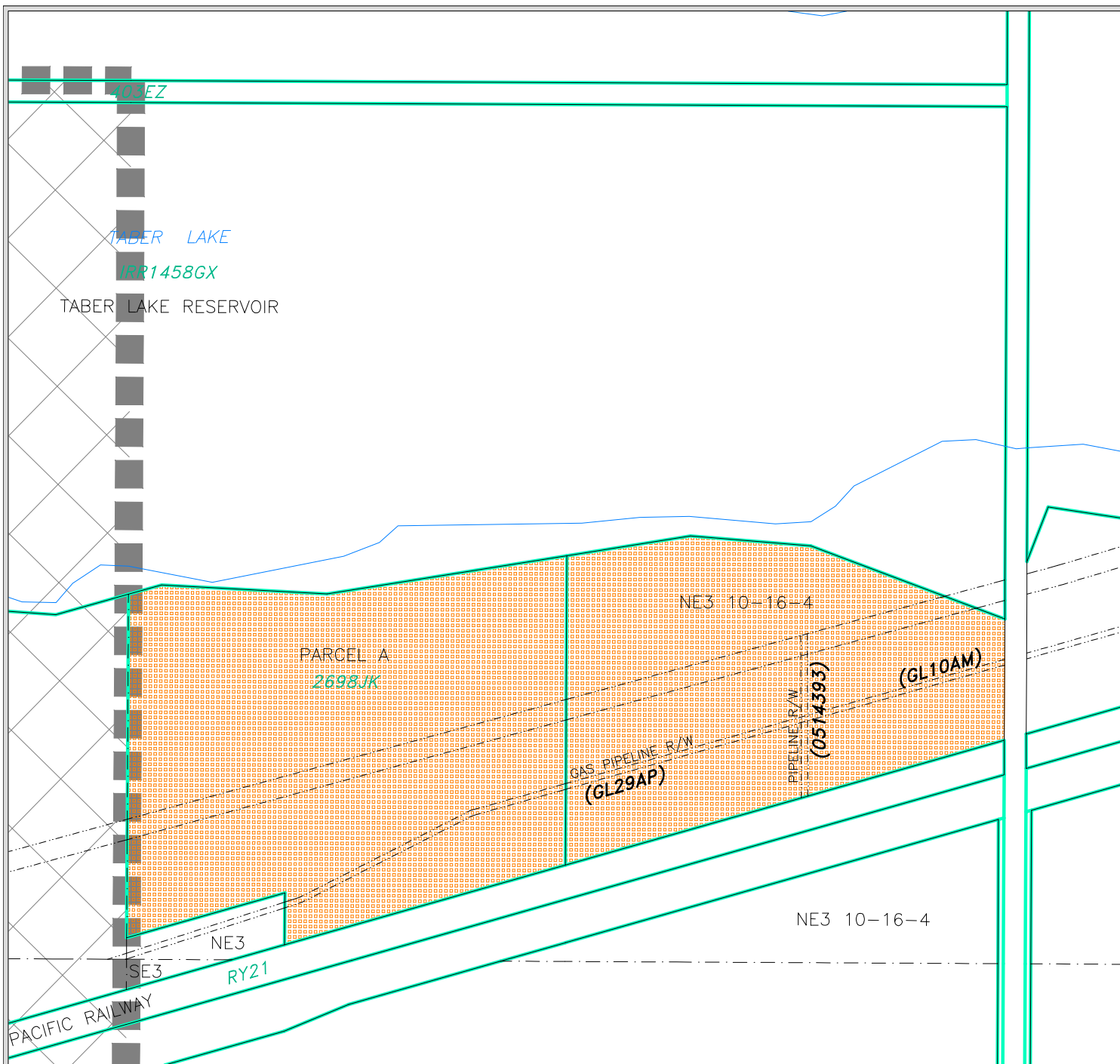
With Amendments To And Including Bylaw 1759, February 13, 2007.

-  Rural Agricultural RA
-  Private Commercial Recreation PCR

MAP # 19









## MUNICIPAL DISTRICT OF TABER

### PARCEL A, PLAN 2698JK & A PORTION OF NE 1/4 SEC 3, TWP 10, RGE 16, W 4 M LAND USE DISTRICT MAP

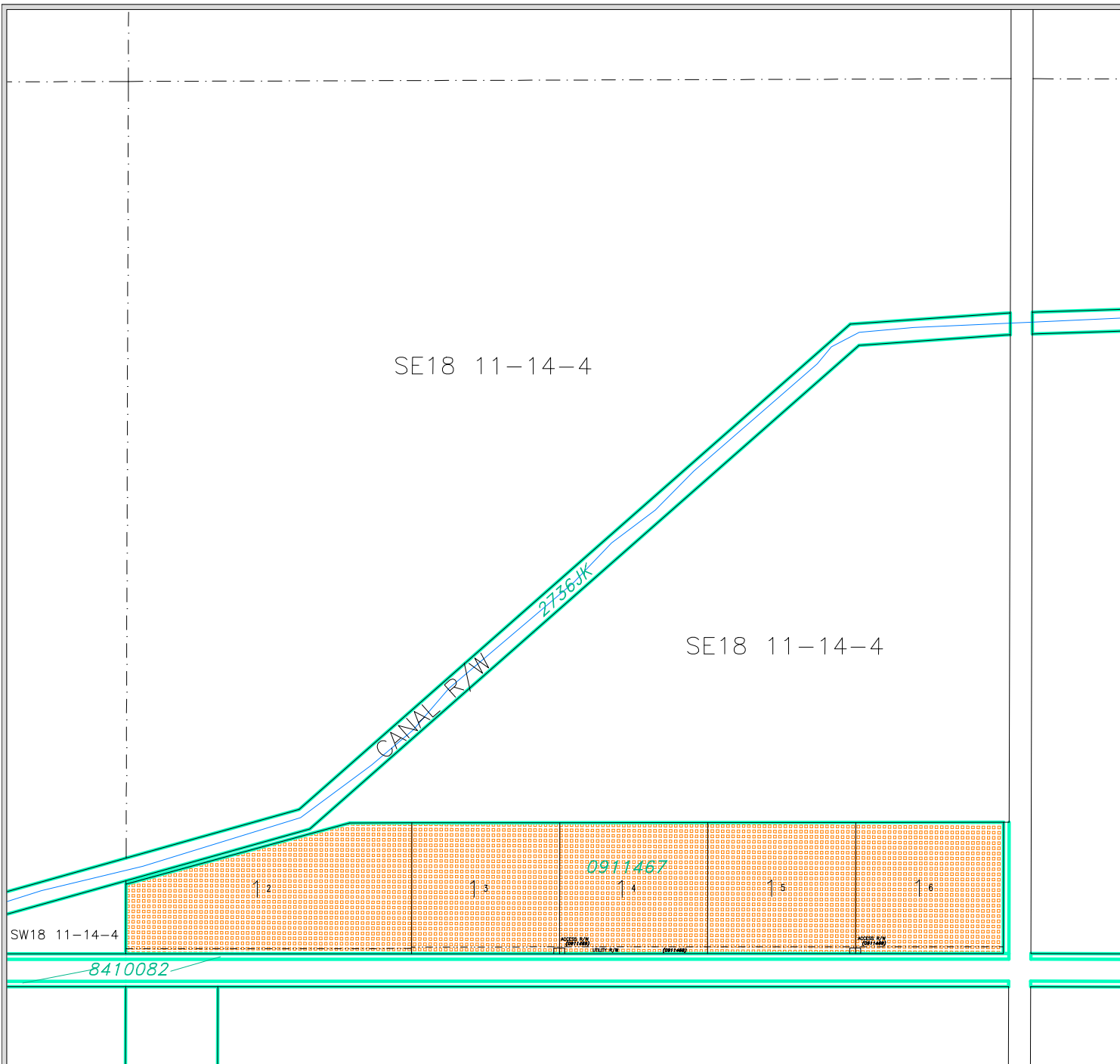
Bylaw No. 1722, January 13, 2004

With Amendments To And Including Bylaw 1750, January 8, 2008

-  Rural Agricultural RA
-  Rural Urban Fringe RUF
-  Grouped Country Residential GCR

MAP # 21





## MUNICIPAL DISTRICT OF TABER

LOT 1, BLOCK 1, PLAN 9612656 IN  
SE 1/4 SEC 18, TWP 11, RGE 14, W 4 M  
LAND USE DISTRICT MAP

Bylaw No. 1722, January 13, 2004

With Amendments To And Including Bylaw 1781, August 12, 2008



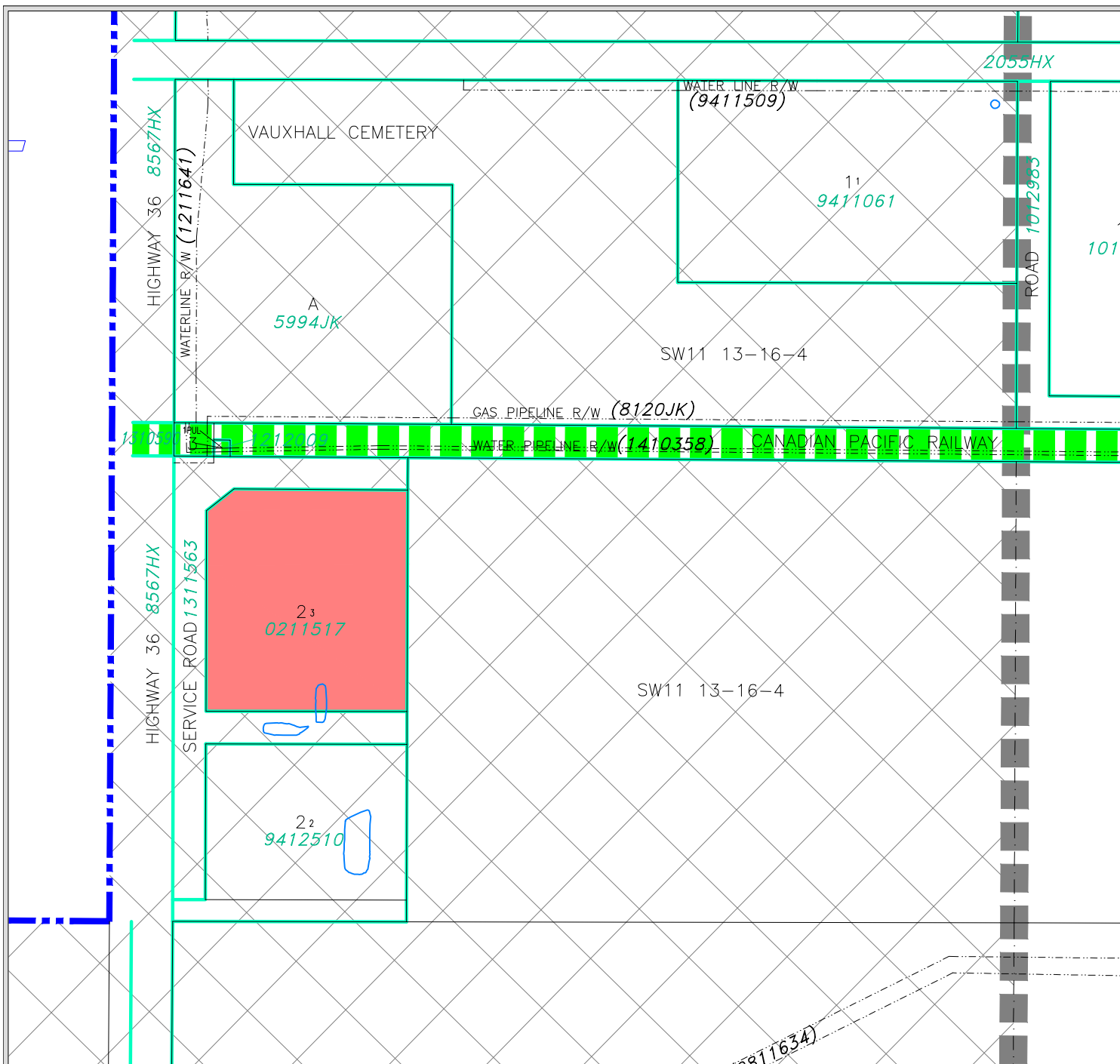
Rural Agricultural RA

Grouped Country Residential GCR

MAP # 22











## MUNICIPAL DISTRICT OF TABER

### LOT 3, BLOCK 2, PLAN 0211517 IN SW 1/4 SEC 11, TWP 13, RGE 16, W 4 M LAND USE DISTRICT MAP

Bylaw No. 1722, January 13, 2004

With Amendments To And Including Bylaw 1783, August 12, 2008

-  Rural Agricultural RA
-  Rural Urban Fringe RUF
-  Rural Highway Commercial RHC
-  Linear Parcel Direct Control LPDC

MAP # 23



SW35  
10-17-4

SE35 10-17-4

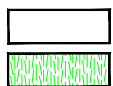
SE35

BATTERY  
SITE  
(8710876)

**MUNICIPAL DISTRICT OF TABER  
PORTION OF SE1/4 SEC 35, TWP 10, RGE 17, W 4 M  
LAND USE DISTRICT MAP**

Bylaw No. 1722, January 13, 2004

With Amendments To And Including Bylaw 1850, June 11, 2013.



Rural Agricultural RA

Private Commercial Recreation PCR

**MAP # 24**



October 29, 2015 N:\Taber-Municipal-District\Taber-MD LUD & Land Use Redesignations\  
Taber MD LUB 1722 January 2004 (Maps amended to Bylaw 1887).dwg



